

# MO ASNAEI

INTERDISCIPLINARY  
VISUAL LEAD



Cinematic CGI | CG Supervision  
Art Direction | AI Workflows

I design and engineer visual meaning — translating story, rhythm, product identity, and technical possibility into cinematic systems for production.

Los Angeles, CA | +1 (213) 676-6915 | mo@asnaei.pro | asnaei.pro



## The question:

What visual problem?

## Use me for

story-to-image translation  
premium product visualization  
custom pipeline design  
AI-assisted concept  
exploration

## Test format

Brief / storyboard  
visual problem.

[Open portfolio → asnaei.pro](https://www.asnaei.pro)

# What I Am / What Your Studio May Need

A visual leadership capacity that can map to the role your studio needs most.

## Visual Interpretation

- Read story, client intention, rhythm, cultural tone, and visual message
- Translate written storyboards and abstract briefs into clear visual direction

## Visual Engineering

- Define look development, shot logic, timing, render strategy, compositing logic, and workflow
- Create clear visual options without losing production discipline

## Production Leadership

- Supervise the bridge between concept and delivery
- Keep artists, tools, client expectations, rhythm, and final quality aligned



Core Strength: I design art and engineer it at the same time, creating a two-way bridge between visual meaning and technical execution.

Read vision → [asnaei.pro/vision](https://asnaei.pro/vision)

# Three Ways a Studio Can Use Me

The title can change. The value stays consistent: story, art direction, CG supervision, film/VFX experience, and technology.

## 01 — Creative Leadership

- Art Director
- Associate Creative Director
- Motion Director
- Interdisciplinary Visual Lead
- For stronger visual language, rhythm, client-facing creative reasoning, and direction options.

## 02 — CG / Production Supervision

- CG Supervisor
- VFX Supervisor
- Visualization Supervisor
- Look Development Lead
- Product Visualization Lead
- For cinematic quality, team supervision, material/light accuracy, rendering discipline, and final delivery control.

## 03 — Creative Technology / AI Workflow

- Creative Technologist
- AI Workflow Lead
- R&D Visual Artist
- Pipeline Consultant
- For custom pipelines, rapid exploration, AI-assisted concepting, quality control, and production-ready execution.

Profile → [asnaei.pro/about-asnaei](https://asnaei.pro/about-asnaei)

**Different titles. One capability: complex visual challenges → production-ready solutions.**

# Precision, Discipline, Art, and Technical Control

Marumedia Tokyo: CG Supervisor across 20+ campaigns, often leading teams of 3 to 10 artists.

**20+**

commercial campaigns

Teams of  
3-10  
artists

**Japan**

precision production

## Why it matters

- Product accuracy
- material discipline
- timing, restraint, and detail
- Every reflection, edge, cut, and camera move supports brand trust

## What I supervised

- Story-to-visual translation, shot logic, product staging, look development, lighting, rendering, compositing, troubleshooting, and final visual consistency.

## Selected brands

- CASIO, G-SHOCK, CITIZEN, Mitsui OSK, Nippon Steel, UD Trucks, ISUZU, YAZAKI, Anest Iwata / Lexus GT-related promotional work, Nubia, KOWA.

Selected work → [asnaei.pro/cases](http://asnaei.pro/cases)

**G-SHOCK**

**CASIO**

**CITIZEN**

**SUZUKI**

**ANEST IWATA**

**NIPPON STEEL**

**MOL**



## Featured Campaign Range

Across these projects, my role was CG Supervisor: translating briefs into visual systems, visual systems into CG execution, and CG execution into final audience impact.

### CITIZEN Series 8 Mechanical

CG Supervisor  
Developed premium macro visualization for a luxury mechanical timepiece. Supervised look development, metal and glass materials, lighting, camera timing, and cinematic product presentation.

[View Work →](#)



### G-SHOCK 40th Anniversary U.S. Event Main Video / GA01 Animation Campaign

CG Supervisor  
Translated celebration and character-animation briefs into cinematic product storytelling. Supervised animation, lighting, rendering, compositing, shot flow, visual rhythm, and final polish.

[Case study →](#)



### Nippon Steel Engineering DX Corporate Video CG Supervisor

Cinematic CG visualization of advanced industrial manufacturing. Steel production, material quality, and engineering precision.

[View Work →](#)

### Anest Iwata / Lexus GT Motorsport Promotional Film

CG Supervisor  
Supervised CG production for an Anest Iwata-sponsored Lexus GT racing promotional film. Directed shot execution, vehicle animation, lighting, rendering, compositing, and final visual consistency.

[View Work →](#)



# A Bridge I Am Actively Expanding

My work is not limited to production. I am developing a wider method for connecting visual thinking, education, art, technology, and studio problem-solving.

## Current research direction

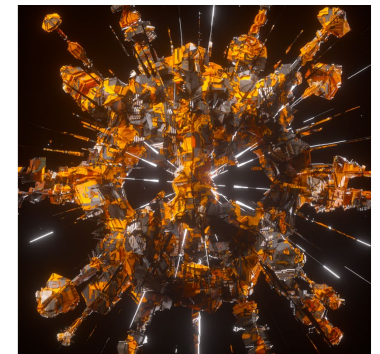
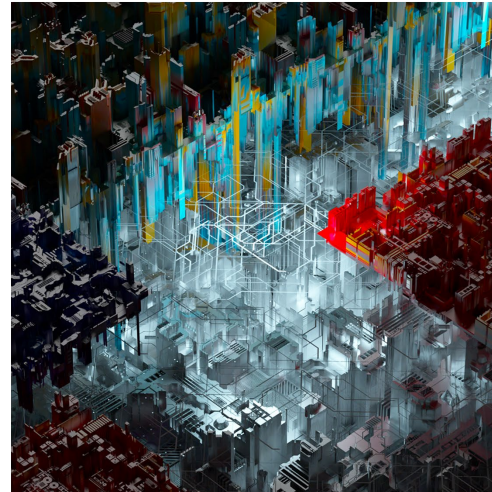
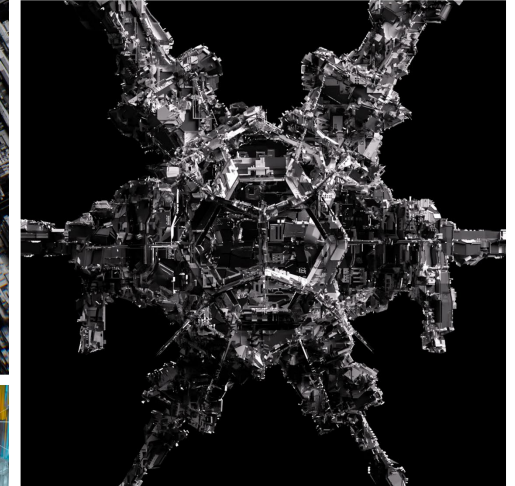
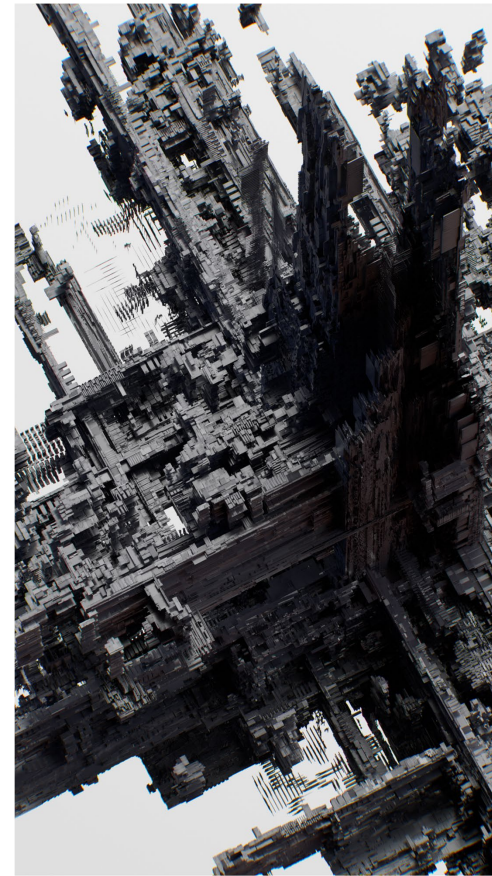
- Research-informed frameworks connecting spatial memory, procedural play, visual education, mathematical thinking, and artistic interpretation
- Collaborative early-childhood education work in New Zealand contexts
- A broader method for turning complex ideas into clear visual systems

## Why this matters to studios

- Studios often receive complex messages that are not yet visual
- I can analyze the structure of a message, define visual logic, and build production pathways around it
- This reduces ambiguity before production becomes expensive

## Studio application:

complex communication → visual grammar → rhythm → storyboard logic → CG treatment → repeatable pipeline.



- Assets
- Nodes
- Models
- Workflows
- Apps
- Templates

### AI + CUSTOM PIPELINE DESIGN

## Fast Options Without Losing Authorship or Production Control

AI is a controlled acceleration layer — not a replacement for supervision, art direction, or production discipline.

### AI for Concept and Ideation

- Rapid idea discovery
- Styleframe exploration
- Mood and visual direction
- Pitch visual acceleration
- Multiple client/director options

### Technical AI Command

- ComfyUI workflows
- Image-to-video workflows
- Controlled visual generation
- Identity/consistency experiments
- AI-to-CG integration thinking

### Project-Specific Pipelines

- Brief analysis
- Storyboard-to-visual interpretation
- Look development system
- CG/AI task division
- Quality-control loop
- Final delivery logic

Advantage: clearer visual direction, faster early exploration, more client/director options, and less wasted energy in full CG execution.



Explore AI / visual systems → [asnaei.pro/vision](http://asnaei.pro/vision)

- Help
- Console
- Shortcuts
- Settings

# Give Me a Visual Problem

The fastest way to understand my value is not only to read a resume. Give me a brief, product, storyboard, or difficult message and see how I structure it.

## 1-Day Strategy Sprint

- Interpret the brief
- Define core visual message
- Identify risks and opportunities
- Propose visual paths and references

## Project-Based Supervision

- Lead CG execution
- Supervise artists
- Manage look development and quality
- Apply commercial CGI + film/VFX supervision experience
- Deliver premium visual consistency

## 3-Day Visual Development Sprint

- Create direction options
- Build storyboard/shot logic
- Prototype look and rhythm
- Define CG/AI pipeline path

Resume → [asnaei.pro/resume](https://asnaei.pro/resume)

View Work → [asnaei.pro/cases](https://asnaei.pro/cases)

Showreel → [asnaei.pro/showreel](https://asnaei.pro/showreel)

Articles → [asnaei.pro/articles](https://asnaei.pro/articles)

Review resume → see visual proof → test the fit.

Strategic close: visual clarity → execution.

Los Angeles, CA | +1 (213) 676-6915 | [mo@asnaei.pro](mailto:mo@asnaei.pro) | [www.asnaei.pro](http://www.asnaei.pro) | [linkedin.com/in/asnaei](https://linkedin.com/in/asnaei)